



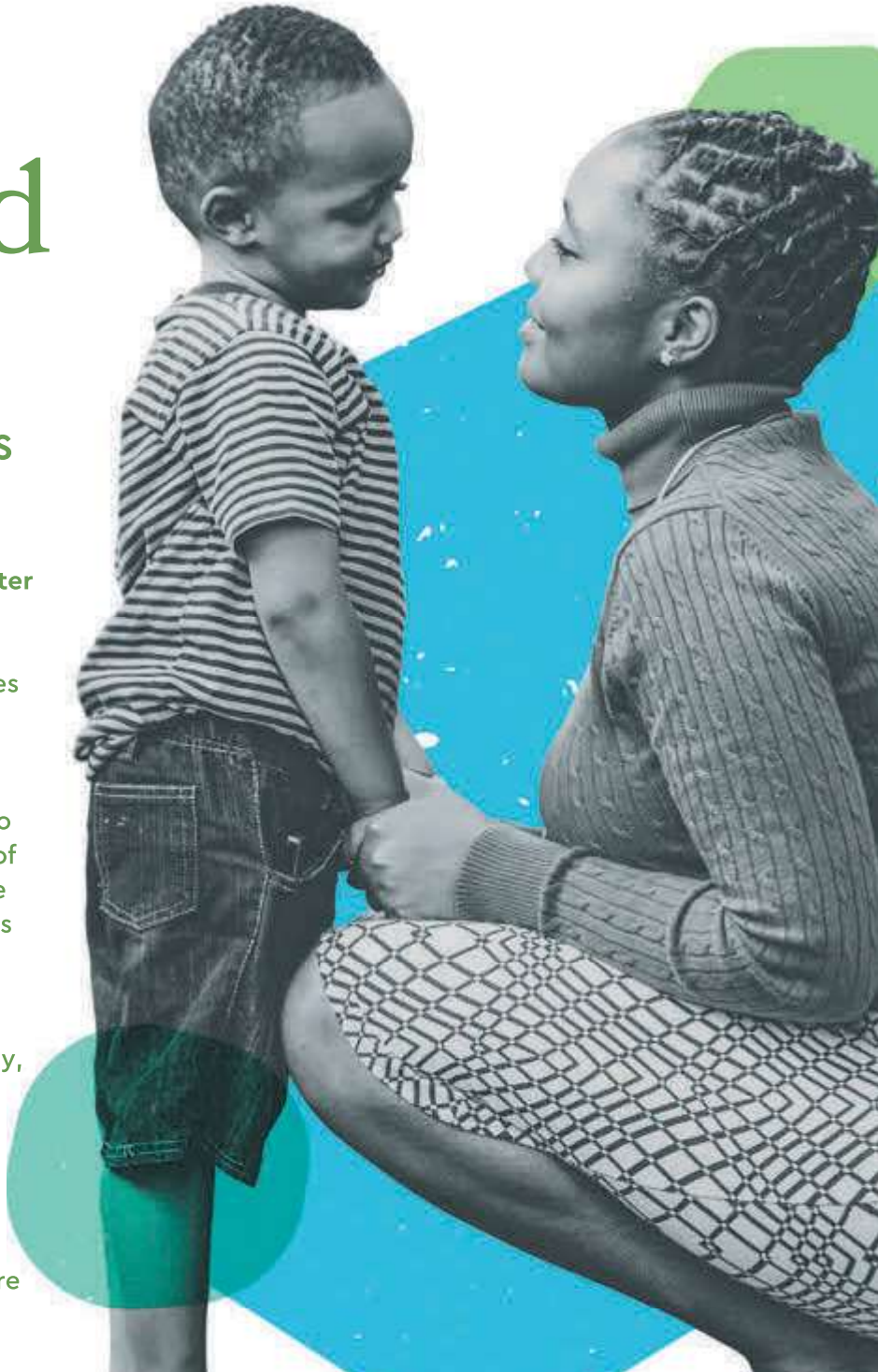
## FAMILY EMPOWERMENT CENTER

# Serving Children, Youth, and Families

IN THEIR OWN COMMUNITIES

Gemma Services' **Family Empowerment Center (FEC)** is a short-term, voluntary prevention program that provides in-home case management and support services for families in Philadelphia. The program is designed to strengthen and stabilize families who have been identified as needing additional social service support. FEC services are designed to prevent children from being referred to out of home placement services. Additionally, these services connect families to various resources and links throughout the community.

In conjunction with in-home services, FEC offers weekly parenting workshops. Generally, Parenting Groups are held in person at the Preheim Center. Presently, we are offering convenient virtual sessions Mondays from 1-2 pm. Topics include information on child development, healthy relationships, and strategies to strengthen the family unit. Childcare, transportation tokens, and food are all provided to workshop attendees.



Learn more at [www.gemmaservices.org](http://www.gemmaservices.org).

# Our Mission

Gemma Services changes lives by transforming hope into action for children, youth, and families facing emotional and behavioral challenges.



&

**theVillage**

Gemma Services was formed in 2019 when Silver Springs – Martin Luther School and theVillage united to operate as one single organization serving children, families, and communities across the Philadelphia region. Representing a combined 300 years of service to vulnerable and at-risk children and families, **Gemma Services is guided by the vision of a world in which children, youth, and families feel valued and have the tools to realize their highest potential.**

At Gemma Services, we cherish each individual and ensure every youth and family within our community has the tools they need to thrive. Our research-based, trauma-informed programs are designed to cultivate a culture of learning and healing in a safe and nurturing environment.

We offer education programs, mental health services in residential and community settings, foster care and adoption services, and prevention programs.

## PREHEIM CENTER

6517 Chester Ave  
Philadelphia, PA 19142

Reception: (215) 730-2240

Outpatient Intake & Referral: (215) 730-2326

Learn more at [www.gemmaservices.org](http://www.gemmaservices.org).